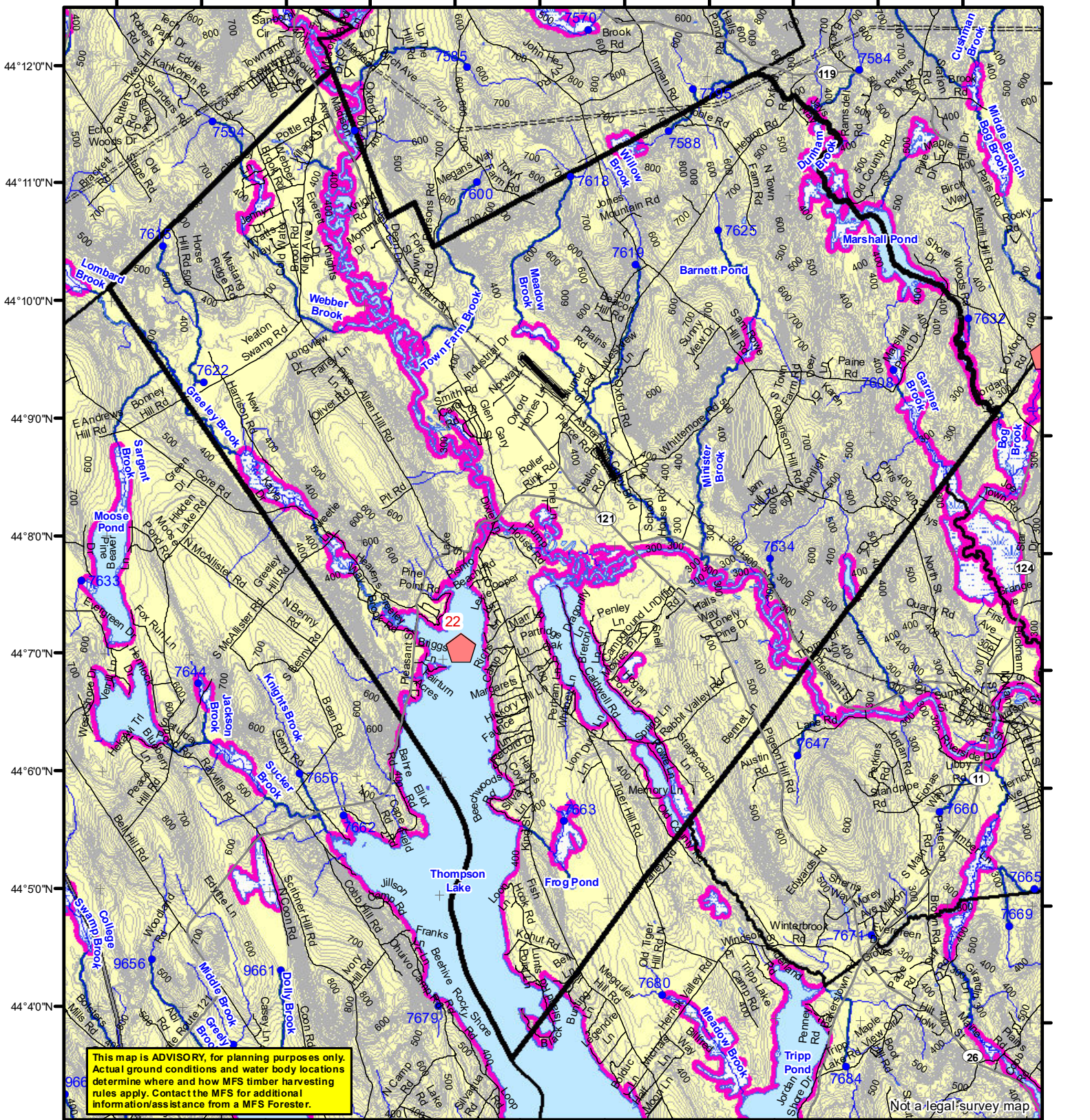


70°34'0"W 70°33'0"W 70°32'0"W 70°31'0"W 70°30'0"W 70°29'0"W 70°28'0"W 70°27'0"W 70°26'0"W 70°25'0"W 70°24'0"W



This map is ADVISORY, for planning purposes only. Actual ground conditions and water body locations determine where and how MFS timber harvesting rules apply. Contact the MFS for additional information/assistance from a MFS Forester.

Statewide Standards

Buffers

- 250 Foot Buffer Zones
- Great Ponds
- Non-forested Wetlands greater than 10 acres
- Rivers below the 25 square mile drainage point
- Coastal Wetlands
- Tidal Waters
- Essential Wildlife Habitat (Least Tern, Roseate Tern, Piping Plover)

75 Foot Buffer Zones

- Streams between the 300 acre drainage point and the 25 square mile drainage point

Shoreline Integrity - Streams draining less than 300 acres, ponds and non-forested wetlands greater than 0.1 acres and less than 10 acres

Shoreline Integrity also applies to UNMAPPED streams and wetlands.

Habitat

- Essential Wildlife Habitat (Least Tern, Roseate Tern, Piping Plover)

Forest Operation Notification & Shoreland Area* Map

Oxford

Adoption Date
7/22/2008

December 2021

0 2,000 4,000 8,000 12,000 Feet

*See MFS Rule - Chapter 2.1 for additional information.

Department of Agriculture, Conservation and Forestry
Maine Forest Service
Forest Policy & Management

Roads

- Interstate
- US Highway
- State Highway
- 24k Roads

Hydrology

- Pond or Lake
- River
- Estuary

Streams

- Electric
- Pipeline
- Railroad
- Airfield

Contours

- 20 ft
- 100 ft

Utilities

- Electric
- Pipeline
- Railroad
- Airfield

Data Source:
Maine Office of GIS

G.T.Miller E:\aws\SW S page size december 2021.mxd

Drainage Points

- 300 Acre Drainage Point (start of the 75 ft buffer) 1234 - ID Number (location info)
- 25 Square Mile Drainage Point (start of the 250 ft buffer) 56 ID Number (location info)

Wetlands

- Emergent or Marine Wetland
- Non-forested Wetlands Greater Than 10 acres (Lacustrine, Palustrine)

LO Last Name _____

LO First Name _____

Prepared By _____

FONS # _____

Date _____

FON Town _____

Statewide Standards Rules do not apply (Town/MDEP Standards apply)

Statewide Standards Rules Apply

LUPC - Unorganized or Deorganized Town

Outside Maine