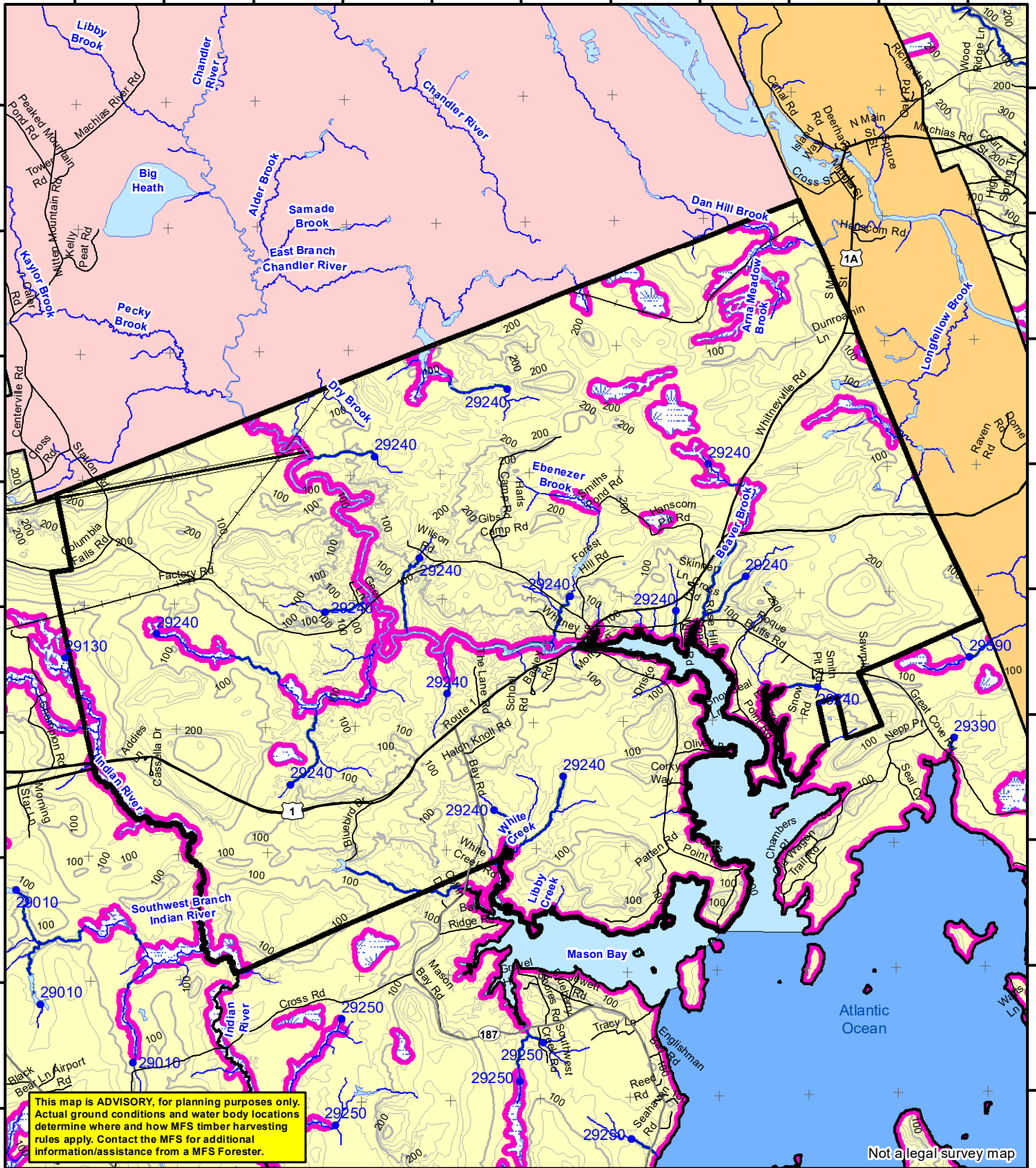


67°40'0"W 67°39'0"W 67°38'0"W 67°37'0"W 67°36'0"W 67°35'0"W 67°34'0"W 67°33'0"W 67°32'0"W 67°31'0"W 67°30'0"W

44°44'0"N
44°43'0"N
44°42'0"N
44°41'0"N
44°40'0"N
44°39'0"N
44°38'0"N
44°37'0"N
44°36'0"N



Not a legal survey map

Statewide Standards

Buffers

- 250 Foot Buffer Zones
- Great Ponds
- Non-forested Wetlands greater than 10 acres
- Rivers below the 25 square mile drainage point
- Coastal Wetlands
- Tidal Waters
- Essential Wildlife Habitat (Least Tern, Roseate Tern, Piping Plover)

75 Foot Buffer Zones

- Streams between the 300 acre drainage point and the 25 square mile drainage point

Shoreline Integrity - Streams draining less than 300 acres, ponds and Non-forested Wetlands greater than 0.1 acres and less than 10 acres

Shoreline Integrity also applies to UNMAPPED streams and wetlands.

Habitat

- Essential Wildlife Habitat (Least Tern, Roseate Tern, Piping Plover)

Drainage Points

- 1234 300 Acre Drainage Point (start of the 75 ft buffer)
- 1234 - ID Number (location info)
- 56 25 Square Mile Drainage Point (start of the 250 ft buffer)
- 56 ID Number (location info)

Wetlands

- Emergent or Marine Wetland
- Non-forested Wetlands Greater Than 10 acres (Lacustrine, Palustrine)

Forest Operation Notification & Shoreland Area* Map

Jonesboro

Adoption Date
2/12/2010

May 2022

Department of Agriculture, Conservation and Forestry
Maine Forest Service
Forest Policy & Management

Roads

- Interstate
- US Highway
- State Highway
- 24k Roads

Hydrology

- Pond or Lake
- River
- Estuary

Streams

LO Last Name _____

LO First Name _____

Prepared By _____

FONS # _____

Date _____

FON Town _____

- Statewide Standards Rules do not apply (Town/MDP Standards apply)
- Statewide Standards Rules Apply
- LUPC - Unorganized or Deorganized Town
- Outside Maine

Data Source:
Maine Office of GIS

G.T.Miller E:\s\sws\page size may 2022.mxd

0 2,000 4,000 8,000 12,000 Feet

*See MFS Rule - Chapter 21 for additional information.