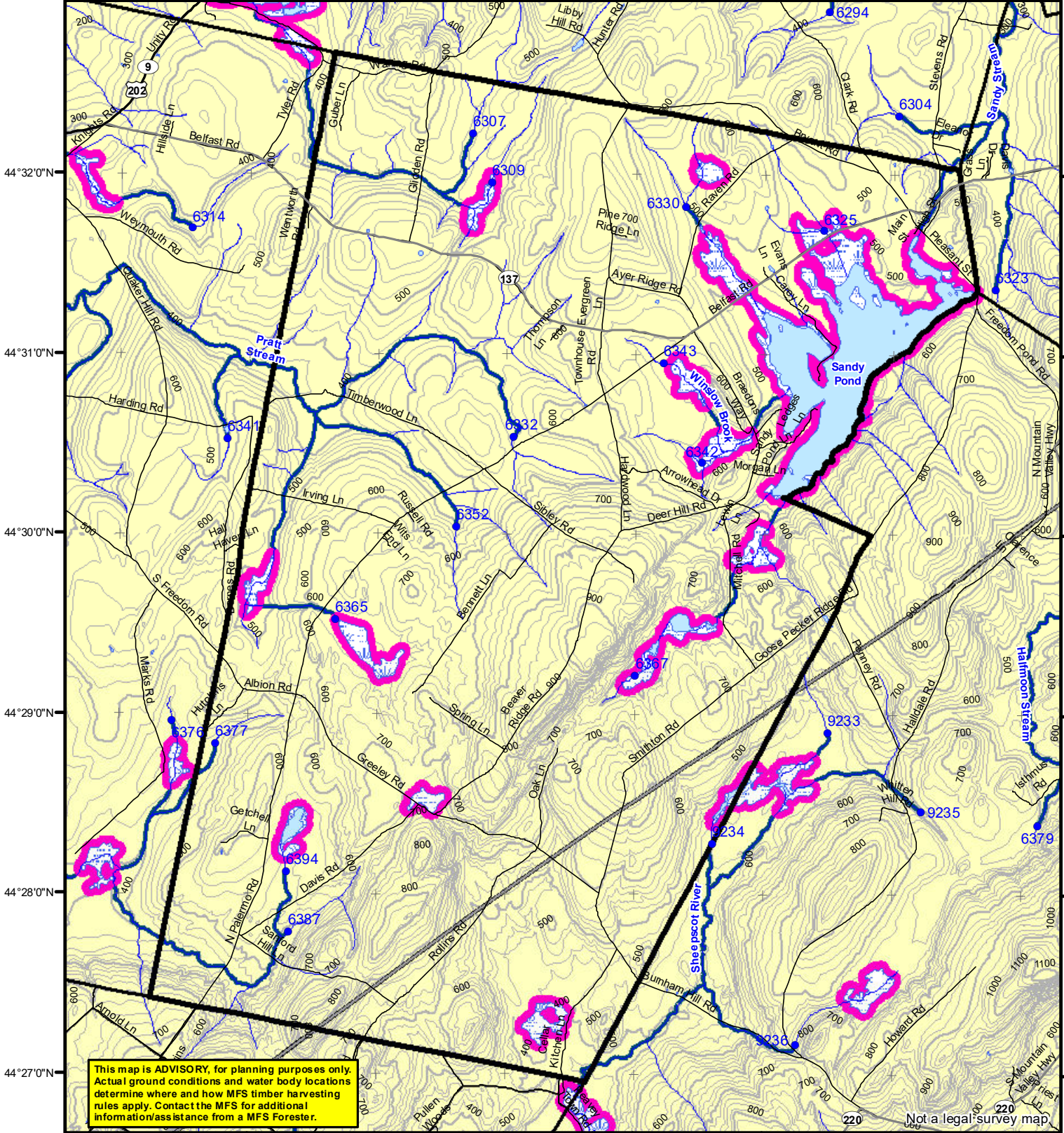


69°24'0"W 69°23'0"W 69°22'0"W 69°21'0"W 69°20'0"W 69°19'0"W 69°18'0"W 69°17'0"W



This map is ADVISORY, for planning purposes only. Actual ground conditions and water body locations determine where and how MFS timber harvesting rules apply. Contact the MFS for additional information/assistance from a MFS Forester.

Statewide Standards

Forest Operation Notification & Shoreland Area* Map

Department of Agriculture, Conservation and Forestry
Maine Forest Service
Forest Policy & Management

LO Last Name _____
LO First Name _____
Prepared By _____
FONS # _____
Date _____

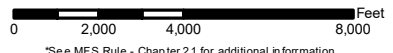
- Buffers**
- 250 Foot Buffer Zones
 - Great Ponds
 - Non-forested Wetlands greater than 10 acres
 - Rivers below the 25 square mile drainage point
 - Coastal Wetlands
 - Tidal Waters
 - Essential Wildlife Habitat (Least Tern, Roseate Tern, Piping Plover)
 - 75 Foot Buffer Zones - Streams between the 300 acre drainage point and the 25 square mile drainage point
 - Shoreline Integrity - Streams draining less than 300 acres, ponds and Non-forested Wetlands greater than 0.1 acres and less than 10 acres
 - Shoreline Integrity also applies to UNMAPPED streams and wetlands.
- Habitat**
- Essential Wildlife Habitat (Least Tern, Roseate Tern, Piping Plover)

- Drainage Points**
- 1234 300 Acre Drainage Point (start of the 75 ft buffer) 1234 - ID Number (location info)
 - 56 25 Square Mile Drainage Point (start of the 250 ft buffer) 56 ID Number (location info)
- Wetlands**
- Emergent or Marine Wetland
 - Non-forested Wetlands Greater Than 10 acres (Lacustrine, Palustrine)

Freedom

Adoption Date
6/21/2009

December 2021



- Roads**
- Interstate
 - US Highway
 - State Highway
 - 24k Roads
- Hydrology**
- Pond or Lake
 - River
 - Estuary
- Streams**

- Contours**
- 20 ft
 - 100 ft
- Utilities**
- Electric
 - Pipeline
 - Railroad
 - Airfield
- Data Source:**
Maine Office of GIS

- FON Town**
- Statewide Standards Rules do not apply (Town/MDEP Standards apply)
 - Statewide Standards Rules Apply
 - LUPC - Unorganized or Deorganized Town
 - Outside Maine

*See MFS Rule - Chapter 2.1 for additional information.