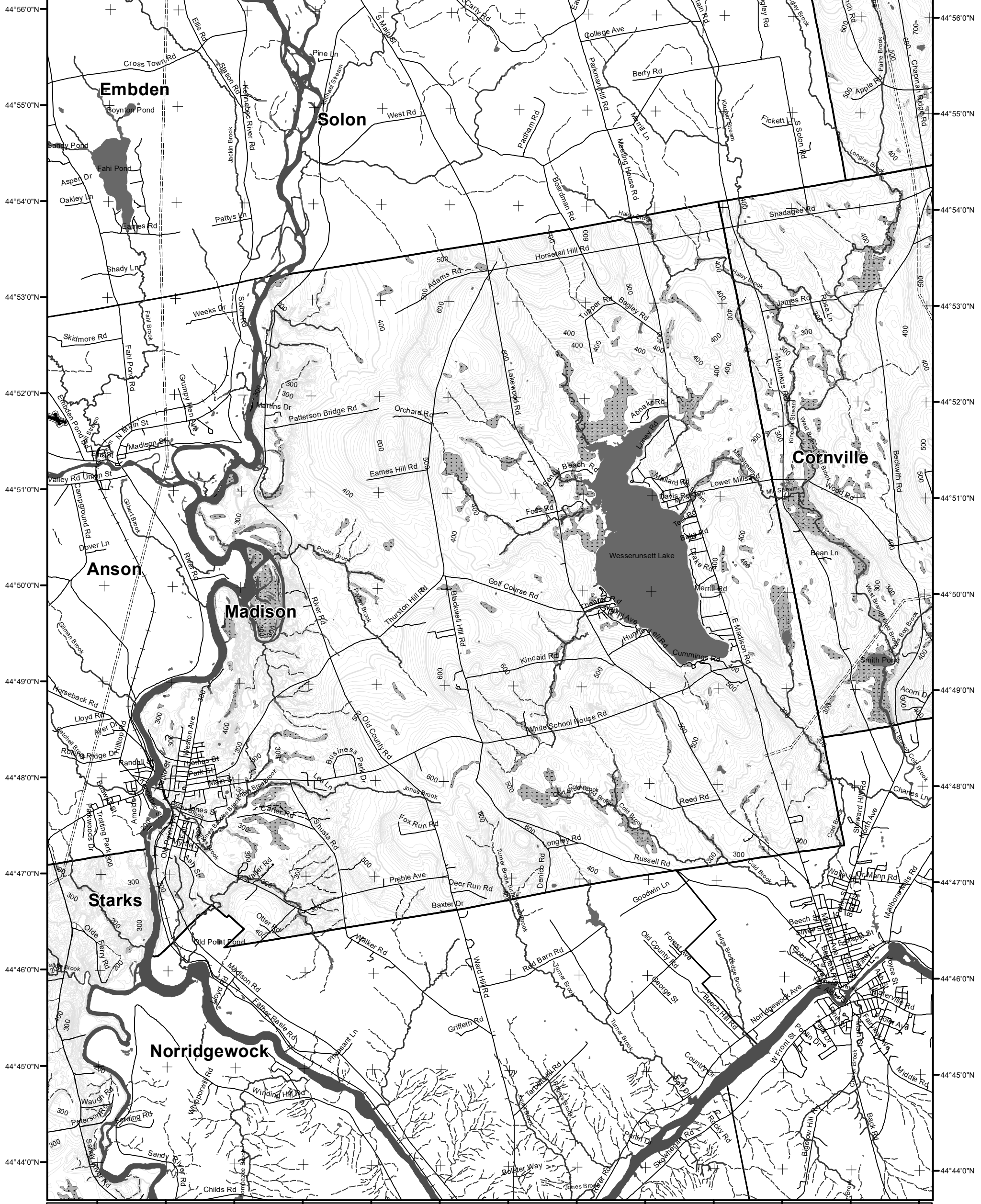


69°54'0"W 69°53'0"W 69°52'0"W 69°51'0"W 69°50'0"W 69°49'0"W 69°48'0"W 69°47'0"W 69°46'0"W 69°45'0"W 69°44'0"W 69°43'0"W 69°42'0"W



LO Last Name \_\_\_\_\_

LO First Name \_\_\_\_\_

Prepared By \_\_\_\_\_

FONS # \_\_\_\_\_

Date \_\_\_\_\_

### Forest Operation Notification & Harvest Location Map

# Madison

For shoreland zoning, check with Town Office/DEP

<b>Roads</b> — E911 Roads — 24k Roads	<b>Freshwater Wetlands</b> ■ Forest/Shrub	<b>Town Status</b> ■ FON Town <small>Statewide Standards Rules do not apply (Town/MEP Standards apply)</small> ■ Statewide Standards Rules Apply or LUPC - Unorganized/deorganized Town ■ Outside Maine
<b>Contours</b> — 20 feet — 100 feet	<b>Hydrology</b> ■ Pond or Lake ■ River ■ Estuary	<b>Streams</b> — Stream/River - - - Stream/River: Intermittent — Stream/River: Perennial
<b>Utilities</b> = = = = Electric — Pipeline + Railroad — Airfield		

**PLEASE RETURN ENTIRE MAP**

Not a legal survey map

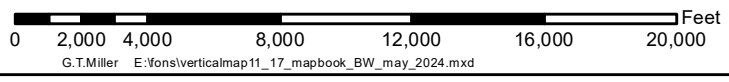
For additional information, Please contact the MFS at:  
 1-207-287-2791 or  
 1-800-367-0223 (in-state)

Email us at: [forestinfo@maine.gov](mailto:forestinfo@maine.gov)

Or visit us on the web at:  
[www.maineforestservice.gov](http://www.maineforestservice.gov)

Department of Agriculture, Conservation and Forestry  
 Maine Forest Service  
 Forest Policy & Management

May 2024



Data Source:  
 Maine Office of GIS  
 US Fish & Wildlife

