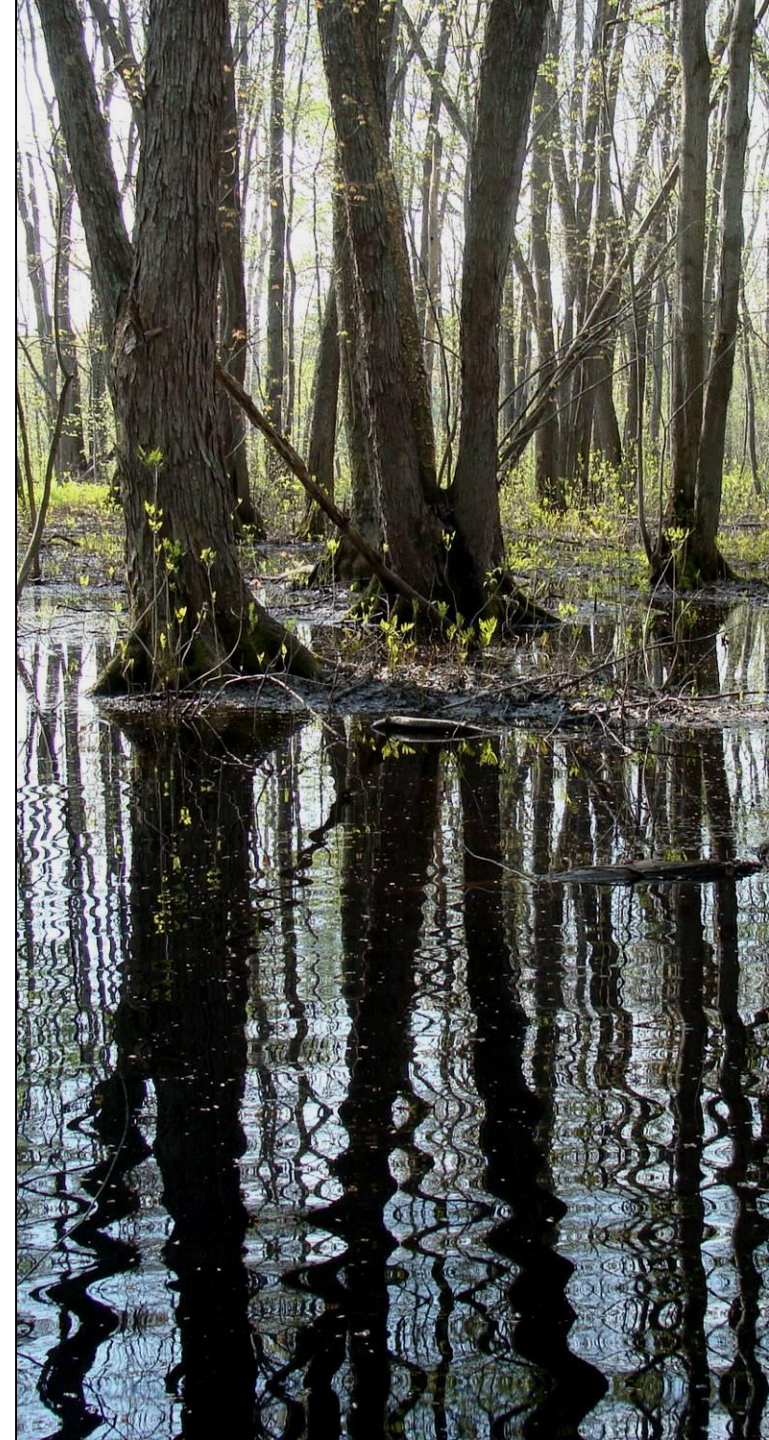


A photograph of a vernal pool in a forest. The water is still, reflecting the surrounding trees and the moss-covered ground. The trees are mostly bare, suggesting a late autumn or winter setting. The ground is covered in green moss and some small plants. The overall scene is serene and natural.

Consider vernal pools in your forest management plans for small private landowners

# Pool Characteristics

- **Ephemeral**
- **Small (< 10,000 sq ft)**
- **No Permanent Inlet/Outlet**
- **No breeding fish, GF or BF**
- **Specialized breeding habitat**



# Key amphibian species



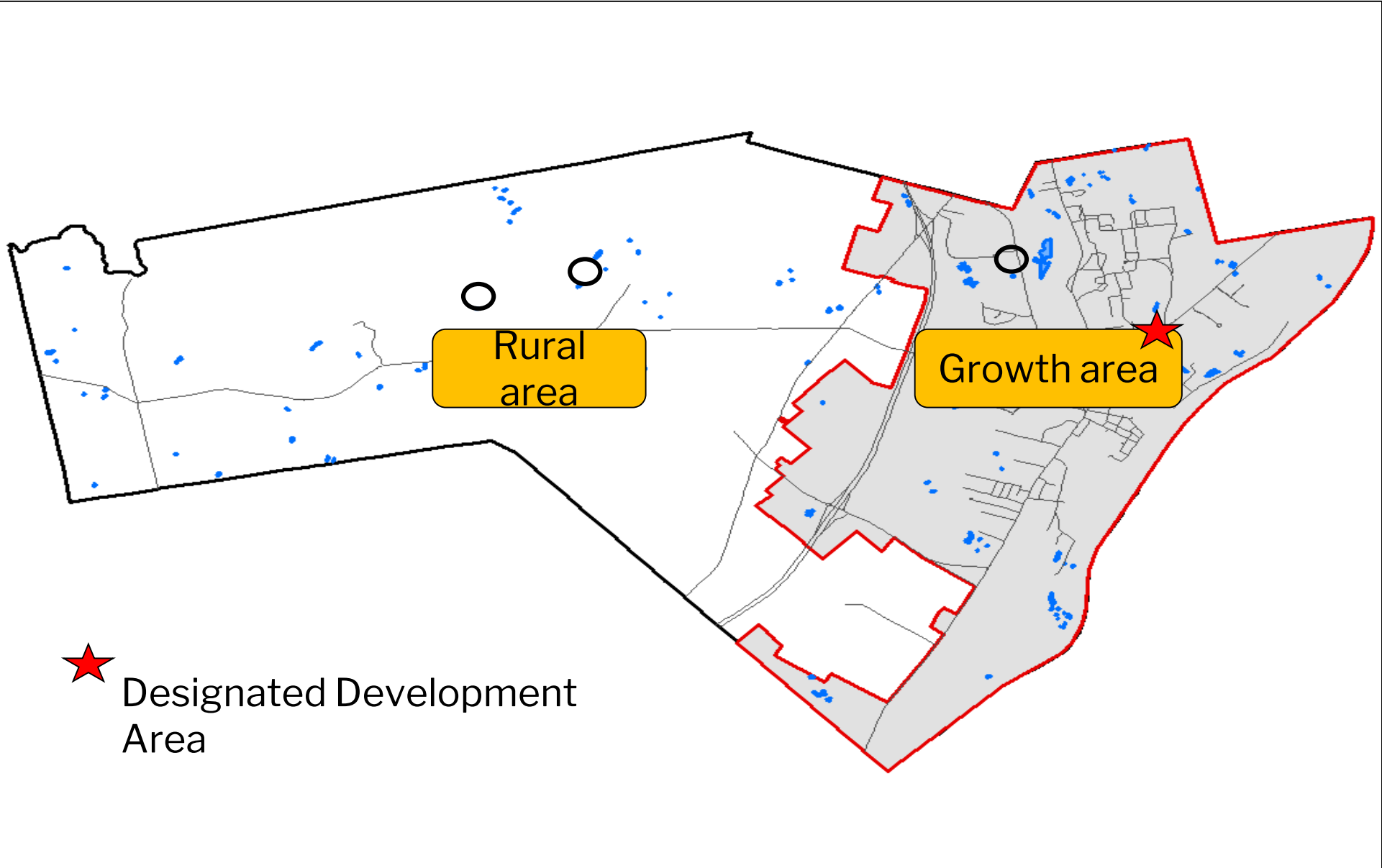


vernal pool S A M P

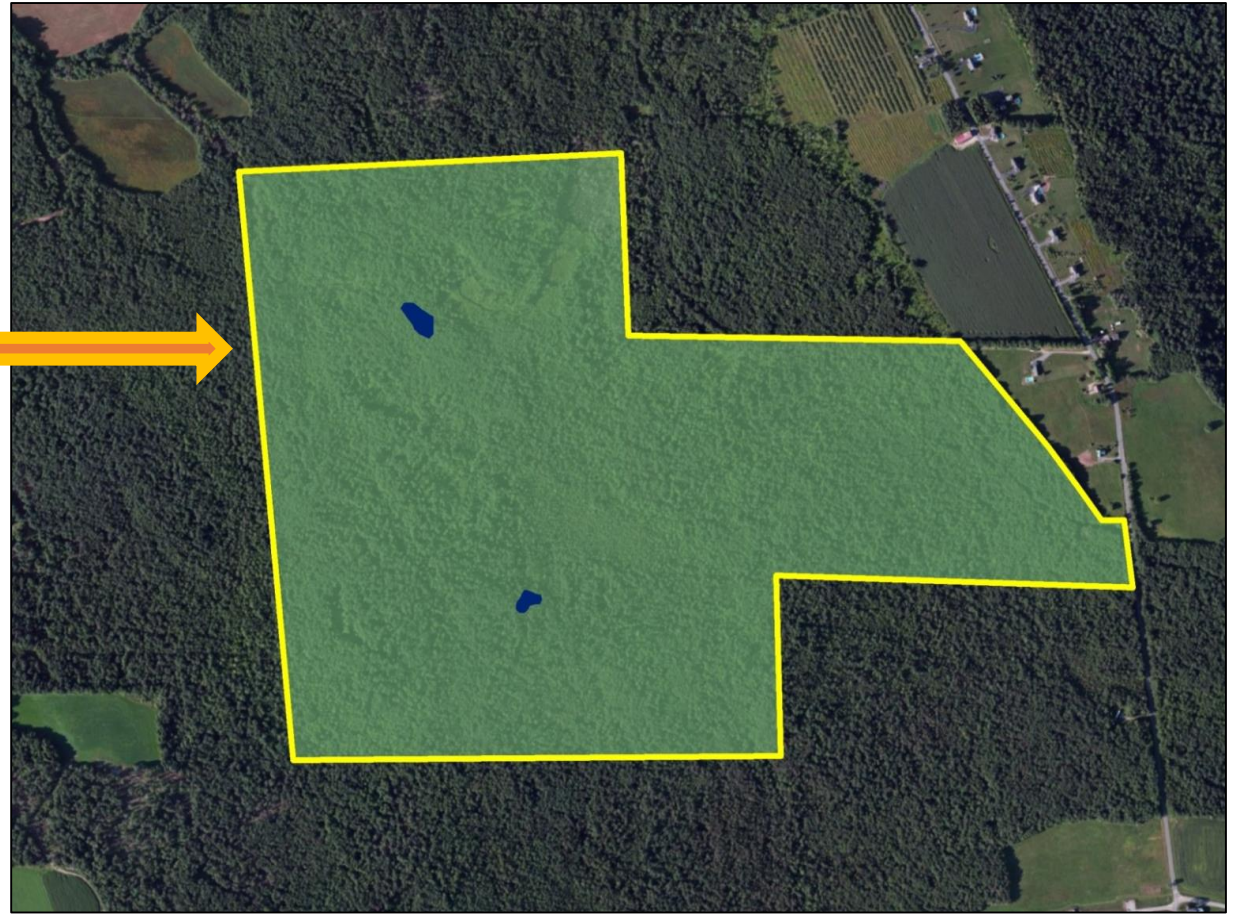
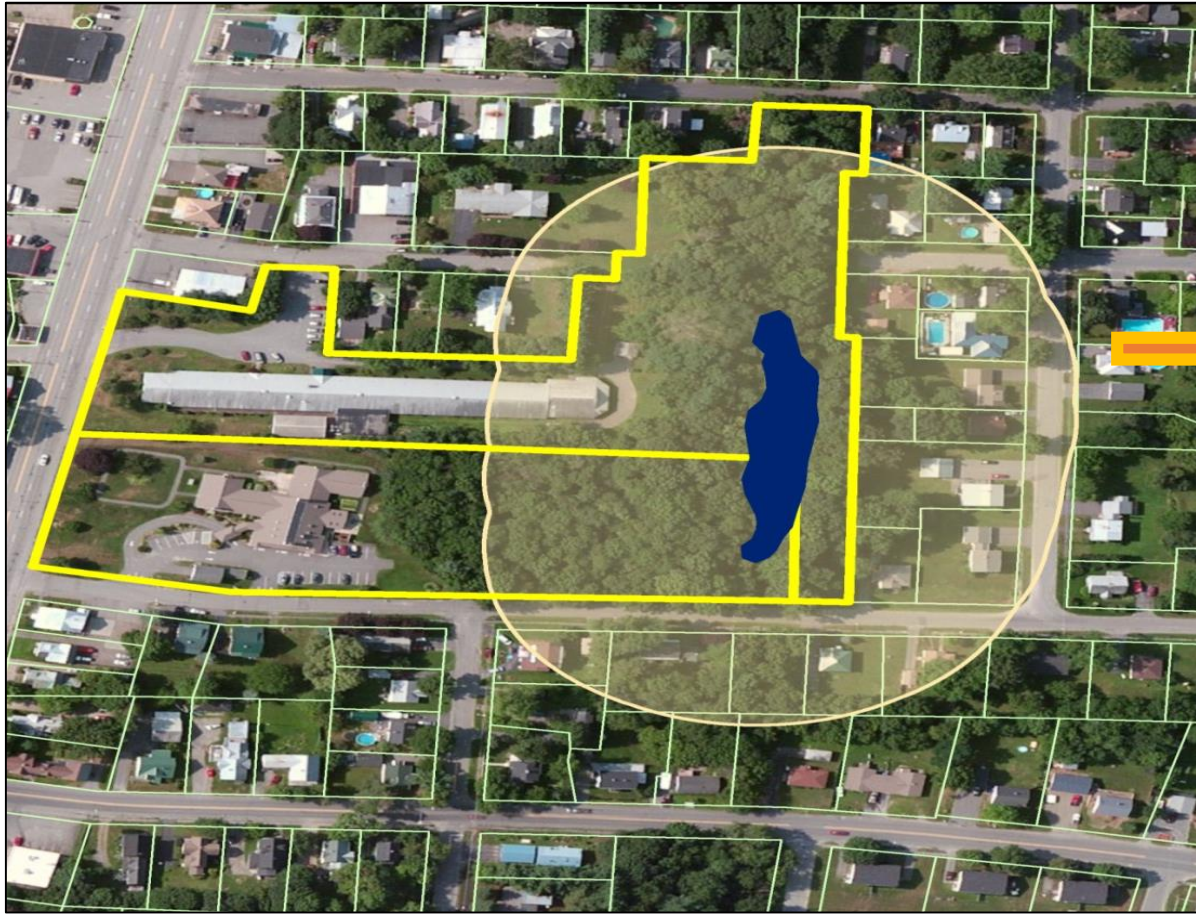
# ME VP SAMP

- Alternative Mitigation Tool
- Approved by US Army Corps /ME DEP
- Adopted by Topsham and Orono
- 7 additional Maine towns now preparing for using this tool





# Growth area/ Rural Area



We have the SAMP...now what??





# ME VP SAMP

- Alternative Mitigation Tool
- Approved by US Army Corps /ME DEP
- Adopted by Topsham and Orono
- 7 additional Maine towns now preparing for using this tool
- **Dependent on rural landowner participation**



# Implementing the SAMP

---



“We are fine with the stewardship of our land. We are pretty careful.”

“I don’t know if there’s more we need to know than we already know.”

“I don’t know how it relates to me because we are not going to build anything.”

“We feel strongly about it in that we are doing the right thing and that we have experts giving us advice.”

# We need your help!

Supporting  
implementation of  
the SAMP

- How can we improve communication with rural landowners?

# Contact us!

We are interested in your questions, your feedback, and your advice on landowner communication...

**Dr. Jessica Jansujwicz**

[jessica.jansujwicz@maine.edu](mailto:jessica.jansujwicz@maine.edu)

**Dr. Aram Calhoun**

[calhoun@maine.edu](mailto:calhoun@maine.edu)

For more information please visit our website: <https://www.vernalpools.me>