

| | |
|-------------|------------|
| DATE | 12/17/2010 |
| DESIGNED BY | ARH |
| CHECKED BY | NSH |
| DATE | 12/17/2010 |
| DESIGNED BY | ARH |
| CHECKED BY | NSH |
| DATE | 12/17/2010 |
| DESIGNED BY | ARH |
| CHECKED BY | NSH |
| DATE | 12/17/2010 |
| DESIGNED BY | ARH |
| CHECKED BY | NSH |

| | |
|-------------|------------|
| DESIGNED BY | ARH |
| DATE | 12/17/2010 |
| SCALE | 1" = 100' |
| CHECKED BY | NSH |
| APPROVED BY | NSH |

PROJECT: HIGHLAND WIND PROJECT
 HIGHLAND PLANTATION, MAINE
 DRAWING DESCRIPTION: OVERHEAD ELECTRIC CONSTRUCTION ACCESS AND MATTING PLAN

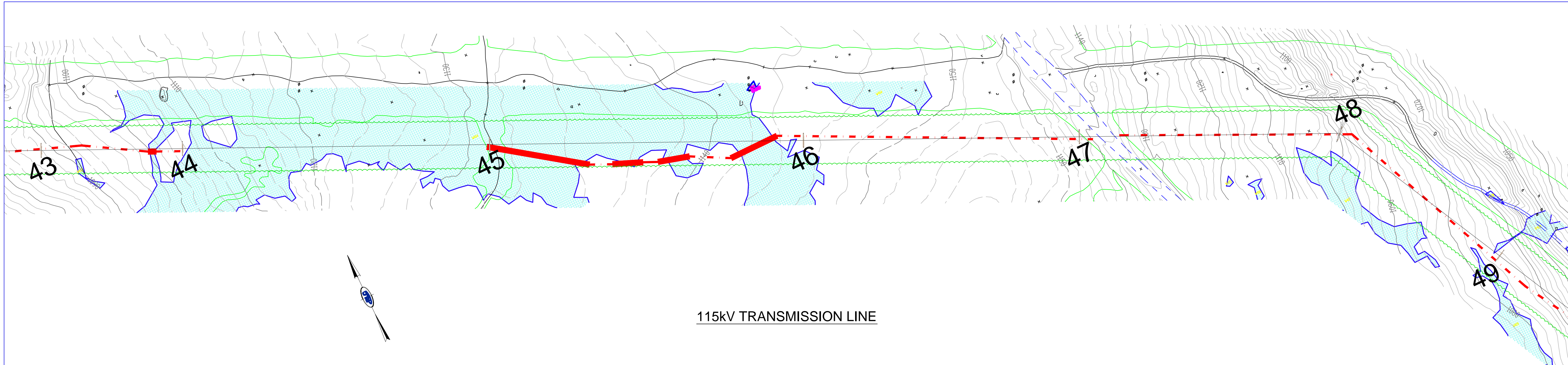
SHEET #

14001

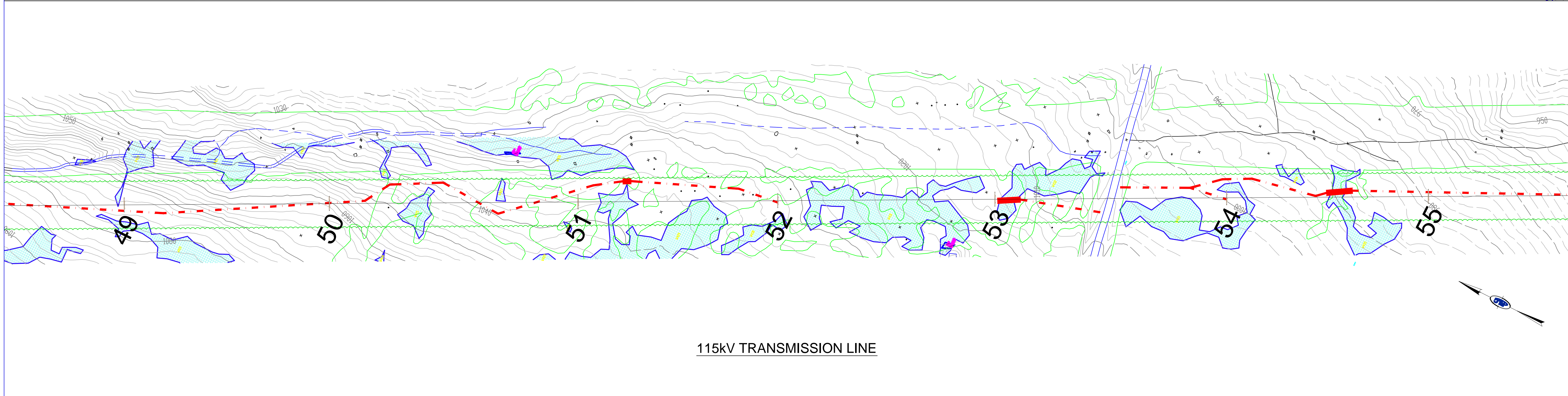
18 MEADOW ROAD
 P.O. Box 722
 AUGUSTA, ME 04332
 207.621.1077

PHASE: PERMIT

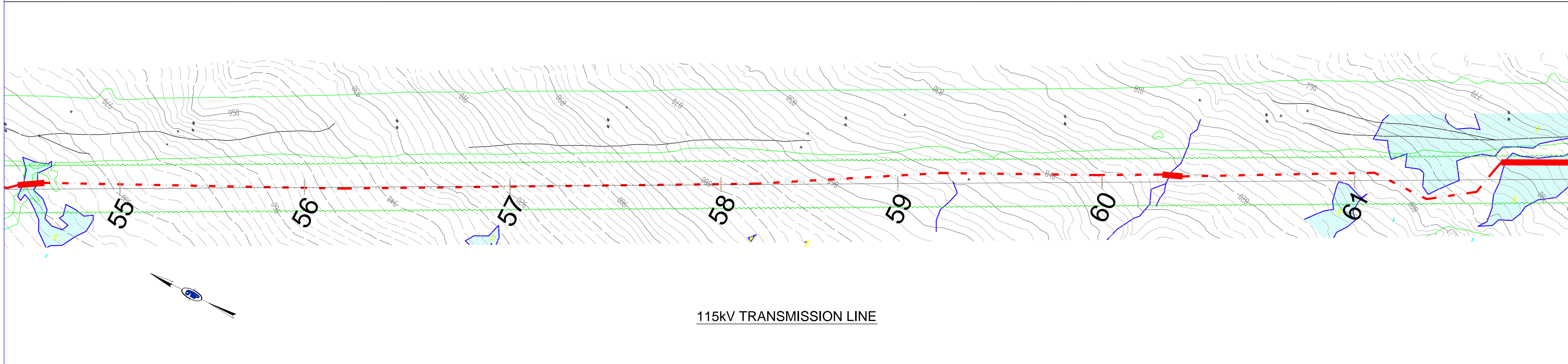
SHEET #: E-701



115kV TRANSMISSION LINE

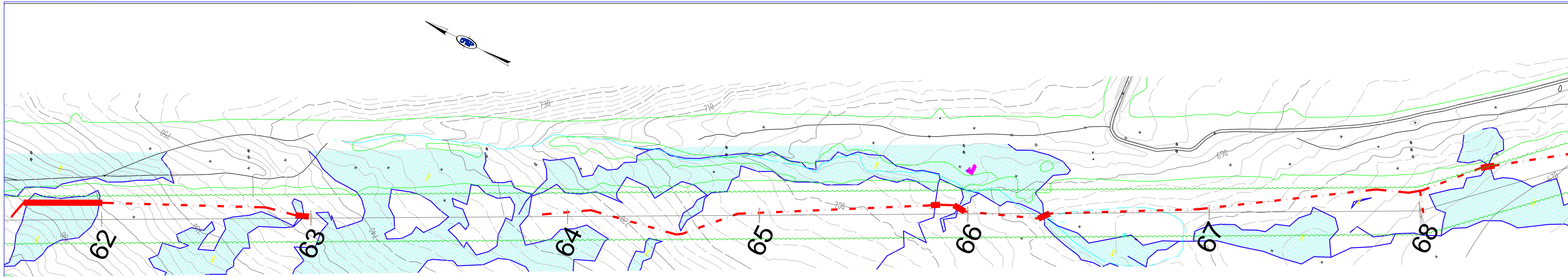


115kV TRANSMISSION LINE

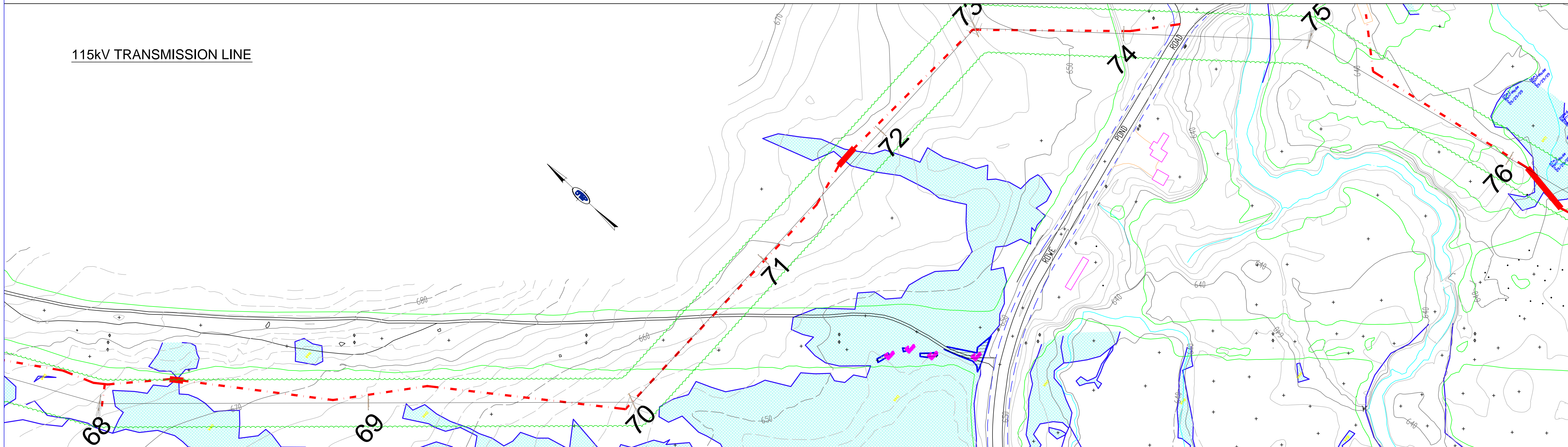


115kV TRANSMISSION LINE

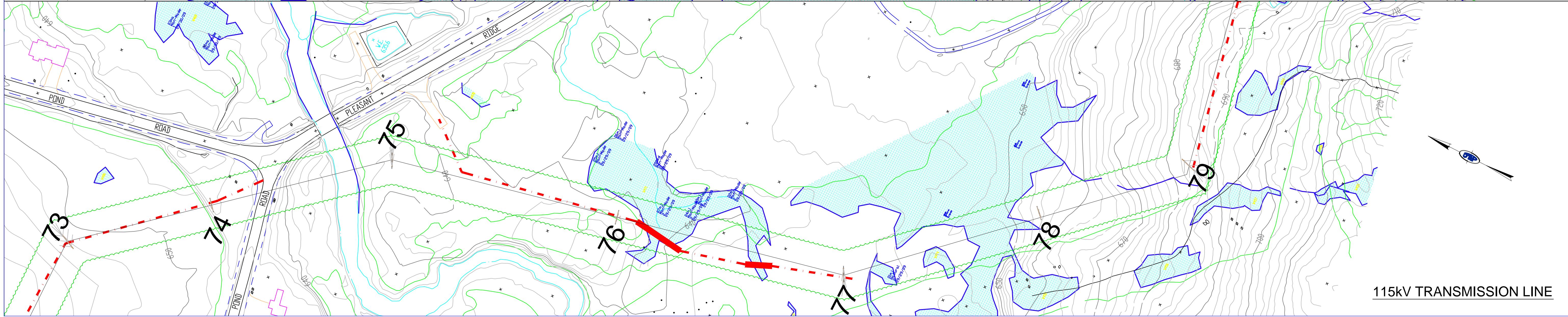
| | | | |
|---|--|---|-------------------------|
| PROJECT # 14001 | ENGINEER RLC ENGINEERING | 18 MEADOW ROAD P.O. Box 722 AUGUSTA, ME 04332 207.621.1077 | |
| | | PHASE PERMIT | SHEET # E-704 |
| PROJECT HIGHLAND WIND PROJECT HIGHLAND PLANTATION, MAINE | | DRAWING DESCRIPTION OVERHEAD ELECTRIC CONSTRUCTION ACCESS AND MATTING PLAN | |
| DESIGNED ARH | CHECKED NSH | DATE 12/17/2010 | APPROVED NSH |
| DRAWN ARH | REVISION A | SCALE 1" = 100' | APPROVED NSH |
| No. A | Date by ARH | Description FOR PERMIT APPLICATION ONLY - NOT FOR CONSTRUCTION | Date 12/17/2010 |



115kV TRANSMISSION LINE



115kV TRANSMISSION LINE



115kV TRANSMISSION LINE

| | |
|-------------|--|
| DATE | 12/17/2010 |
| NO. | A |
| DESCRIPTION | FOR PERMIT APPLICATION ONLY - NOT FOR CONSTRUCTION |

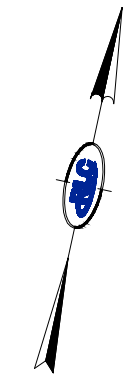
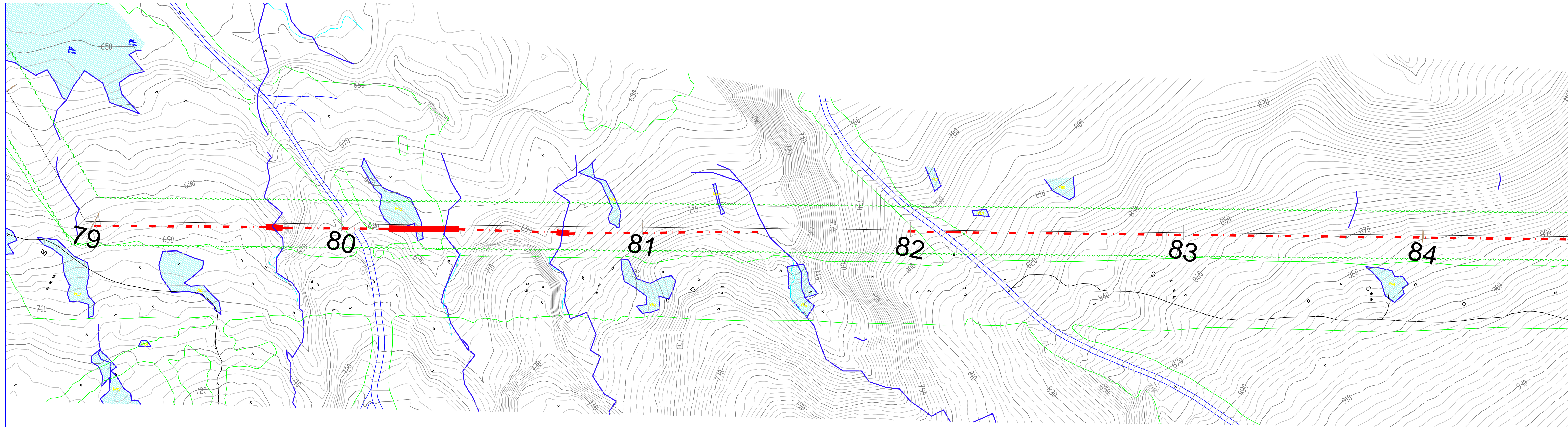
| | | |
|----------|------------|-----------|
| DESIGNED | ARH | ARH |
| DATE | 12/17/2010 | REVISION |
| CHECKED | NSH | SCALE |
| APPROVED | NSH | 1" = 100' |

PROJECT: HIGHLAND WIND PROJECT
 HIGHLAND PLANTATION, MAINE
 DRAWING DESCRIPTION: OVERHEAD ELECTRIC CONSTRUCTION ACCESS AND MATING PLAN

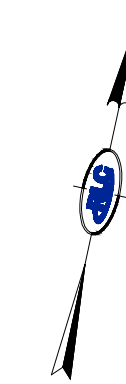
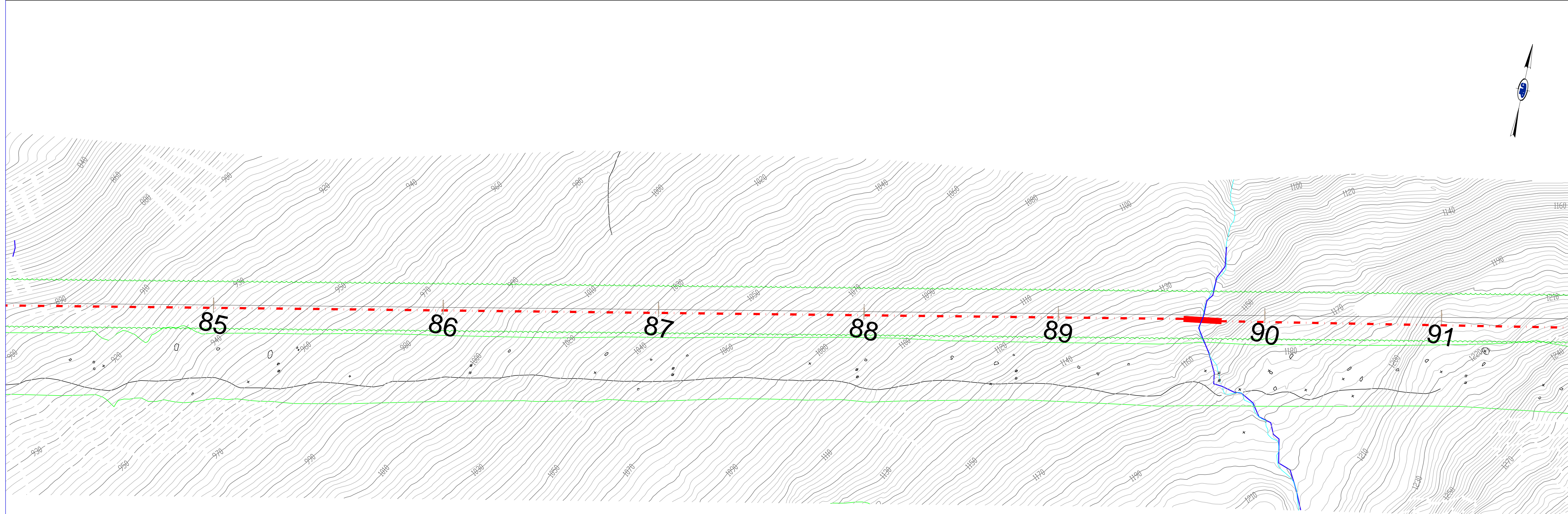
14001

18 MEADOW ROAD
 P.O. Box 722
 AUGUSTA, ME 04332
 207.621.1077

PHASE: PERMIT
 SHEET #: E-705



115kV TRANSMISSION LINE



115kV TRANSMISSION LINE

| | |
|-------------|--|
| DATE | 12/17/2010 |
| DESCRIPTION | FOR PERMIT APPLICATION ONLY - NOT FOR CONSTRUCTION |
| DATE BY | ARH |
| NO. | A |

| | |
|-------------|------------|
| DESIGNED BY | ARH |
| DATE | 12/17/2010 |
| SCALE | 1" = 100' |
| CHECKED BY | NSH |
| APPROVED BY | NSH |

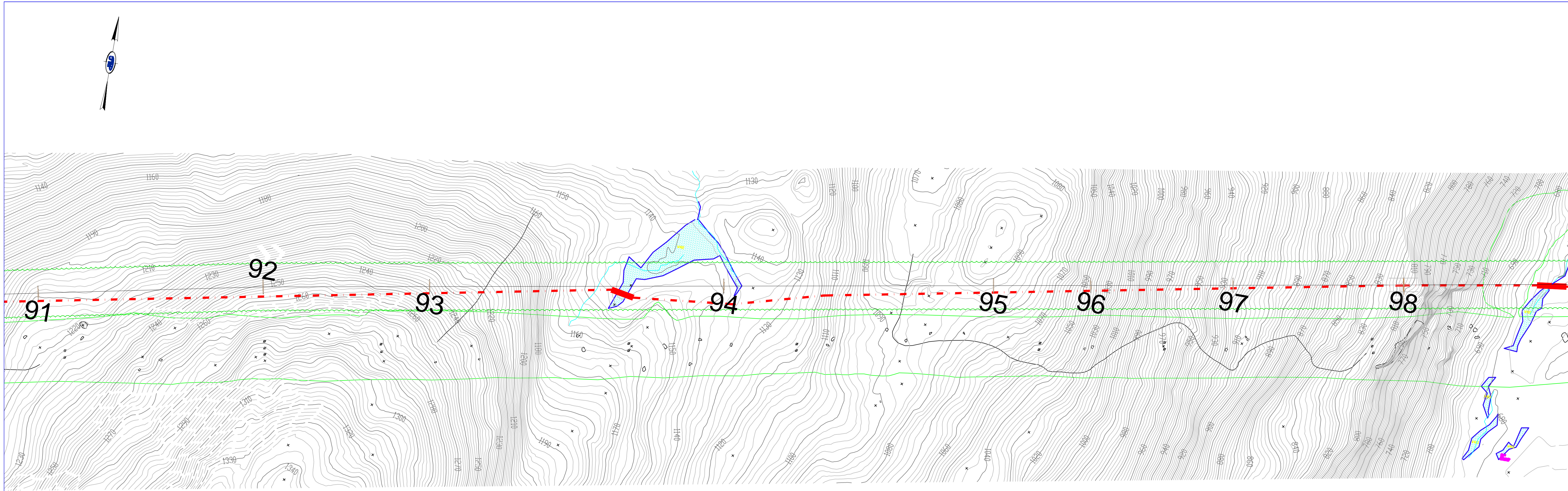
PROJECT: HIGHLAND WIND PROJECT
 HIGHLAND PLANTATION, MAINE
 DRAWING DESCRIPTION: OVERHEAD ELECTRIC CONSTRUCTION ACCESS AND MATTING PLAN

SHEET # 14001

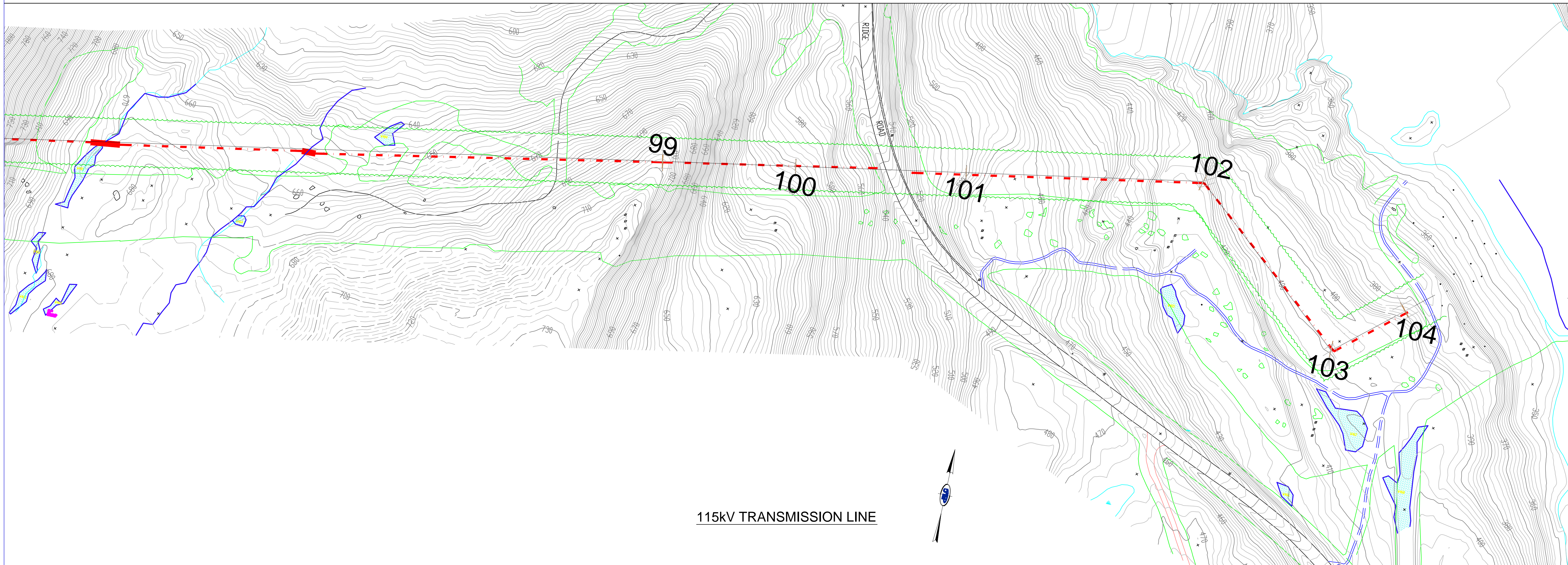
18 MEADOW ROAD
 P.O. Box 722
 AUGUSTA, ME 04332
 207.621.1077

PHASE PERMIT

SHEET # E-706



115kV TRANSMISSION LINE



115kV TRANSMISSION LINE

| | |
|---------------------|--|
| PROJECT # | 14001 |
| | ENGINEER |
| PHASE | PERMIT |
| SHEET # | E-707 |
| PROJECT | HIGHLAND WIND PROJECT |
| | HIGHLAND PLANTATION, MAINE |
| DRAWING DESCRIPTION | OVERHEAD ELECTRIC CONSTRUCTION |
| | ACCESS AND MATING PLAN |
| DESIGNED BY | ARH |
| DATE | 12/17/2010 |
| SCALE | 1" = 100' |
| DRAWN BY | ARH |
| REVISION | A |
| CHECKED BY | NSH |
| APPROVED BY | NSH |
| NO. OF SHEETS | |
| TOTAL SHEETS | |
| DATE | 12/17/2010 |
| DESCRIPTION | FOR PERMIT APPLICATION ONLY - NOT FOR CONSTRUCTION |
| DATE BY | ARH |
| NO. | A |
| DATE | |
| DESCRIPTION | |
| DATE | |
| DESCRIPTION | |

RLC
ENGINEERING

18 MEADOW ROAD
P.O. Box 722
AUGUSTA, ME 04332
207.621.1077