

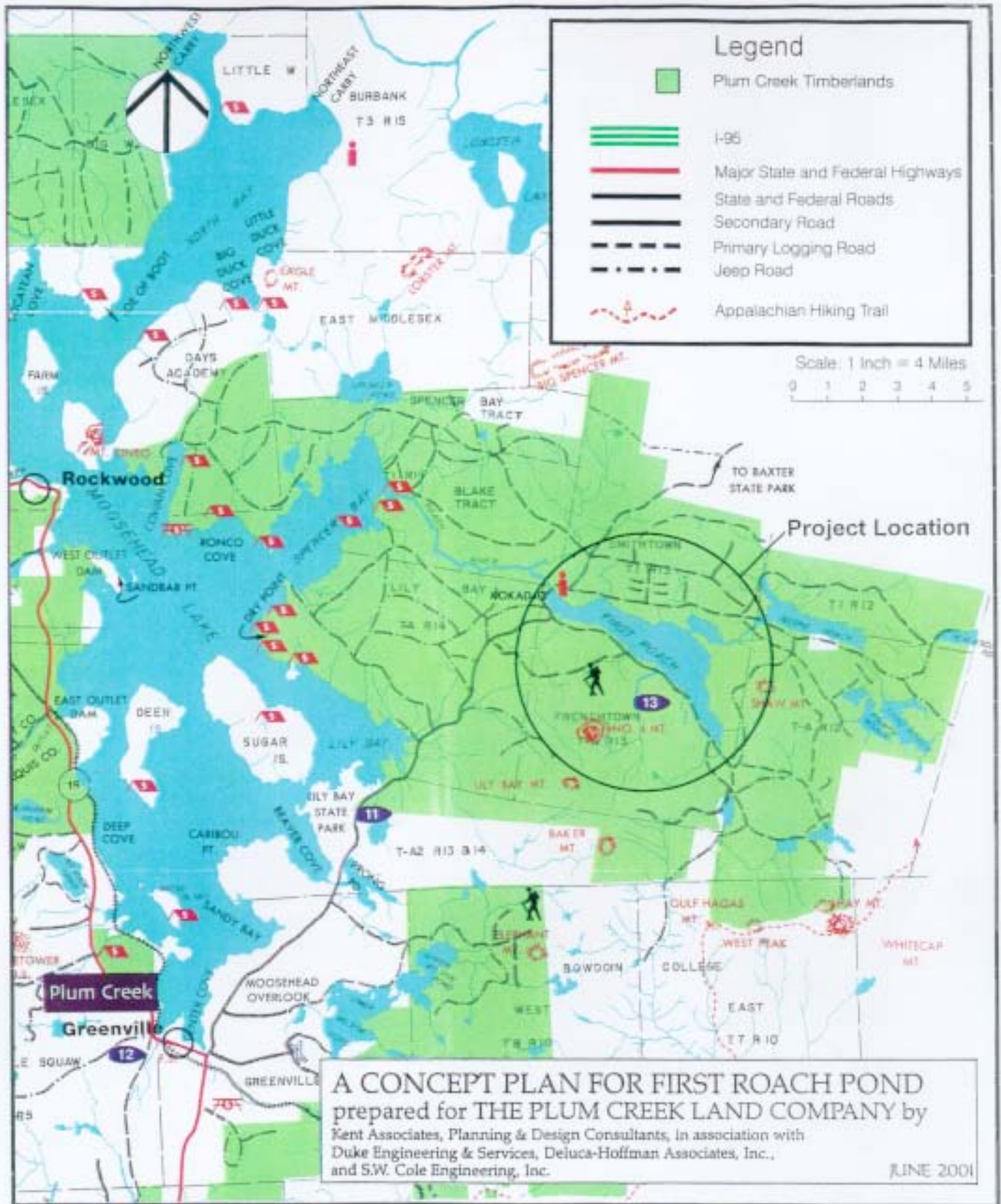
MAP 1 : SITE LOCATION

Source: Comprehensive Land Use Plan for Areas Within the Jurisdiction of the Maine Land Use Regulation Commission (p. 2), Department of Conservation, 1997



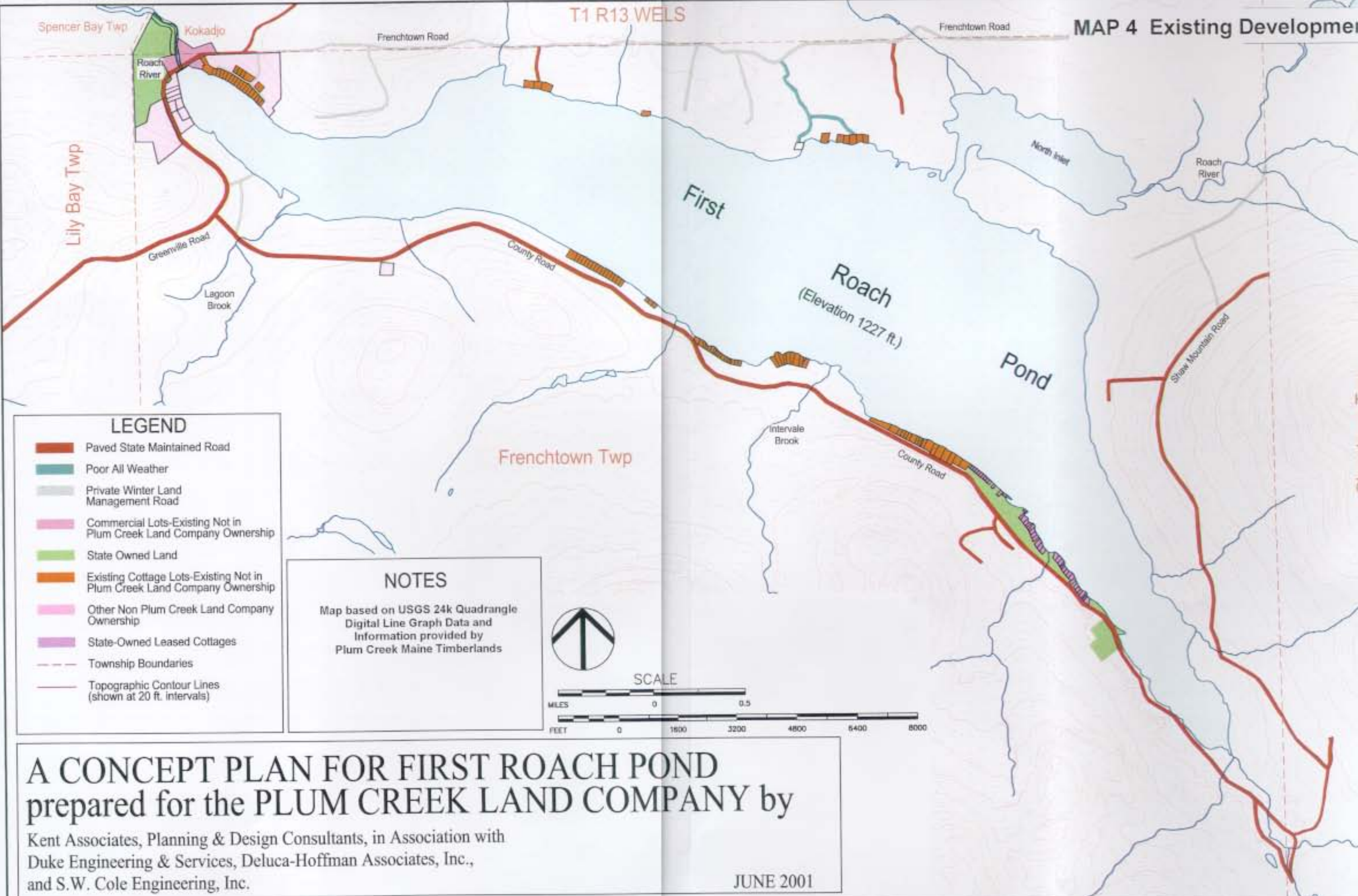
MAP 2 : FIRST ROACH POND WATERSHED

Source: Maps 41 and 42, the Maine Atlas and Gazetteer



MAP 3 : OWNERSHIP

Source: Plum Creek Recreational Map, A Guide to the Maine Timberlands of Plum Creek



T1 R13 WELS

LEGEND

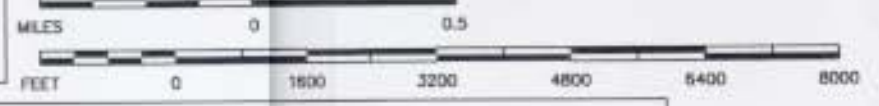
-  Paved State Maintained Road
-  Poor All Weather
-  Private Winter Land Management Road
-  Commercial Lots-Existing Not in Plum Creek Land Company Ownership
-  State Owned Land
-  Existing Cottage Lots-Existing Not in Plum Creek Land Company Ownership
-  Other Non Plum Creek Land Company Ownership
-  State-Owned Leased Cottages
-  Township Boundaries
-  Topographic Contour Lines (shown at 20 ft. intervals)

NOTES

Map based on USGS 24k Quadrangle Digital Line Graph Data and Information provided by Plum Creek Maine Timberlands



SCALE

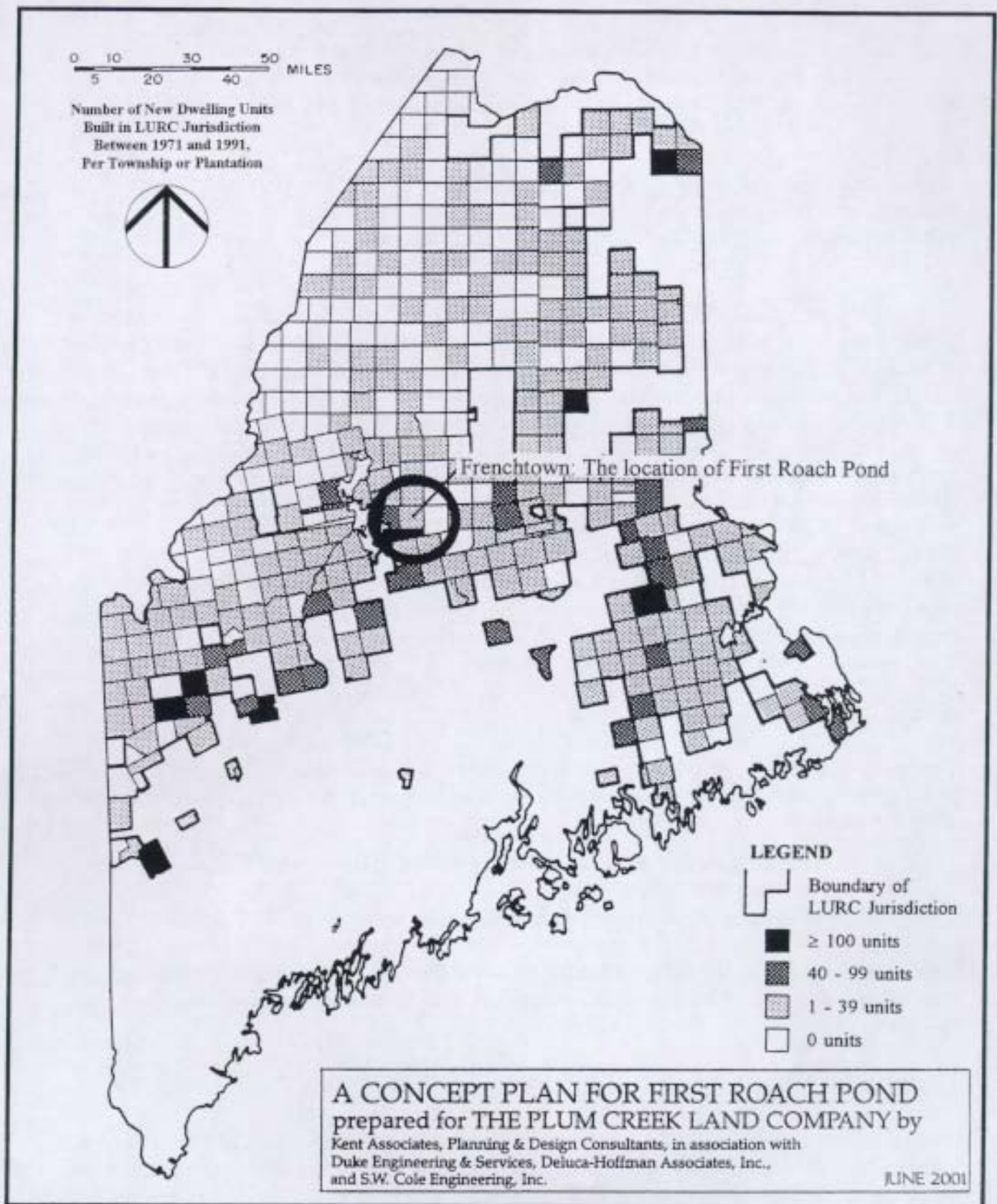


A CONCEPT PLAN FOR FIRST ROACH POND

prepared for the PLUM CREEK LAND COMPANY by

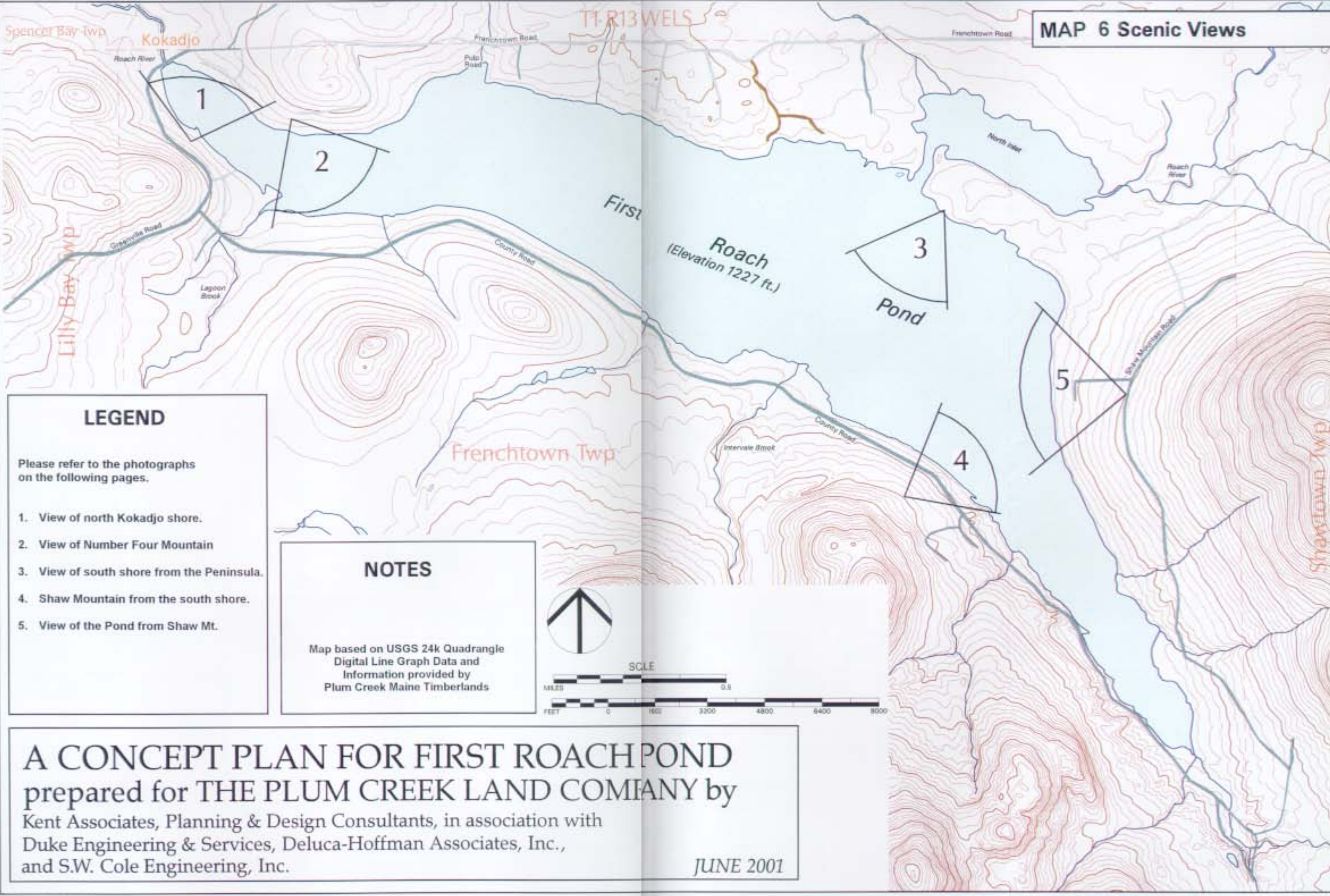
Kent Associates, Planning & Design Consultants, in Association with
 Duke Engineering & Services, Deluca-Hoffman Associates, Inc.,
 and S.W. Cole Engineering, Inc.

JUNE 2001



MAP 5 : NEW DWELLING UNITS IN LURC JURISDICTION 1971-1991

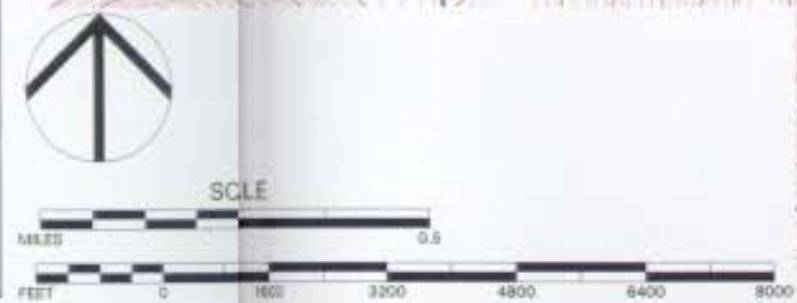
Source: Maine Land Use Regulation Commission Report, Department of Conservation



- LEGEND**
- Please refer to the photographs on the following pages.
1. View of north Kokadjo shore.
 2. View of Number Four Mountain
 3. View of south shore from the Peninsula.
 4. Shaw Mountain from the south shore.
 5. View of the Pond from Shaw Mt.

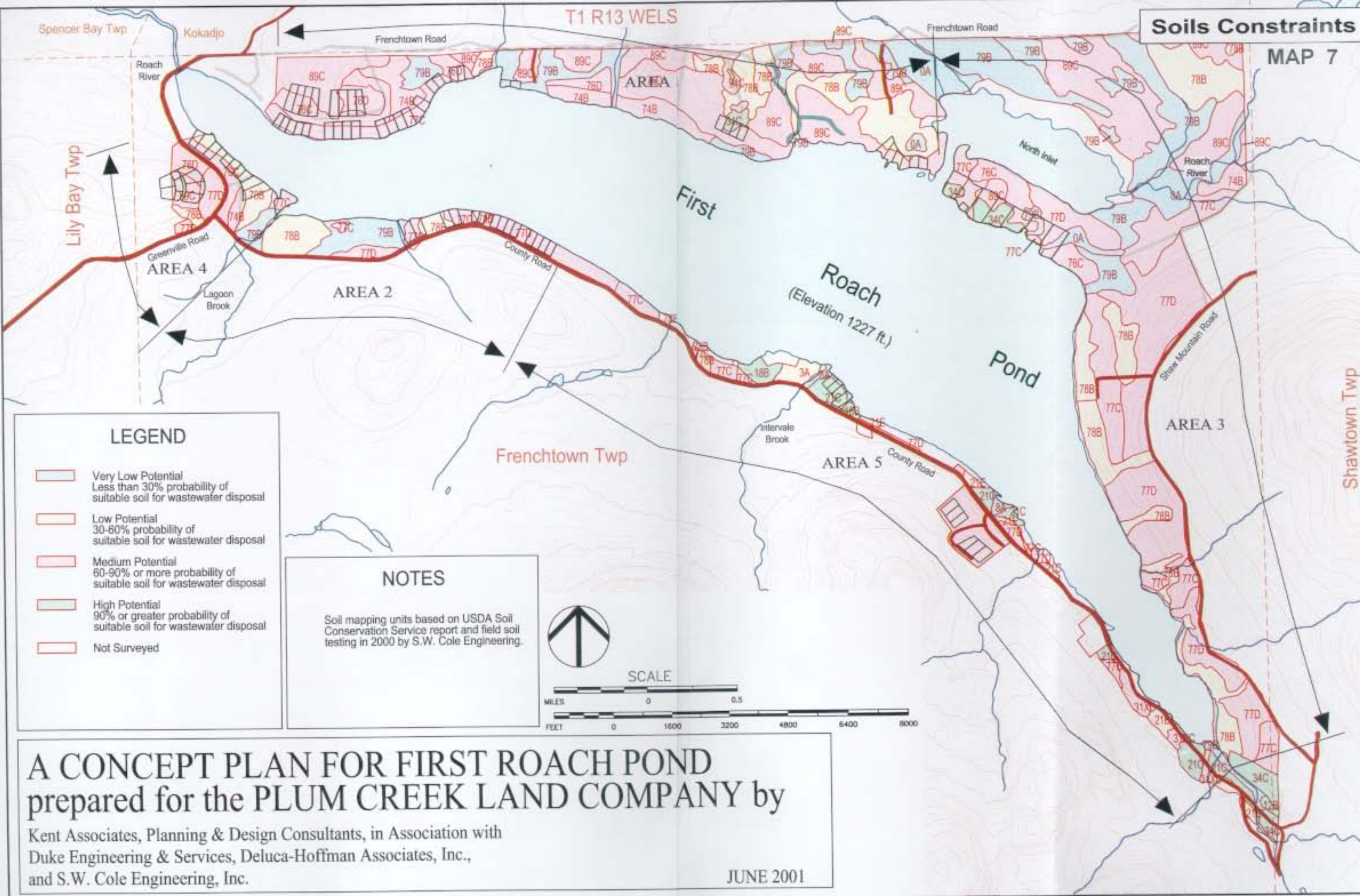
NOTES

Map based on USGS 24k Quadrangle Digital Line Graph Data and Information provided by Plum Creek Maine Timberlands



A CONCEPT PLAN FOR FIRST ROACH POND
 prepared for THE PLUM CREEK LAND COMPANY by
 Kent Associates, Planning & Design Consultants, in association with
 Duke Engineering & Services, Deluca-Hoffman Associates, Inc.,
 and S.W. Cole Engineering, Inc.

JUNE 2001



LEGEND

- Very Low Potential
Less than 30% probability of suitable soil for wastewater disposal
- Low Potential
30-60% probability of suitable soil for wastewater disposal
- Medium Potential
60-90% or more probability of suitable soil for wastewater disposal
- High Potential
90% or greater probability of suitable soil for wastewater disposal
- Not Surveyed

NOTES

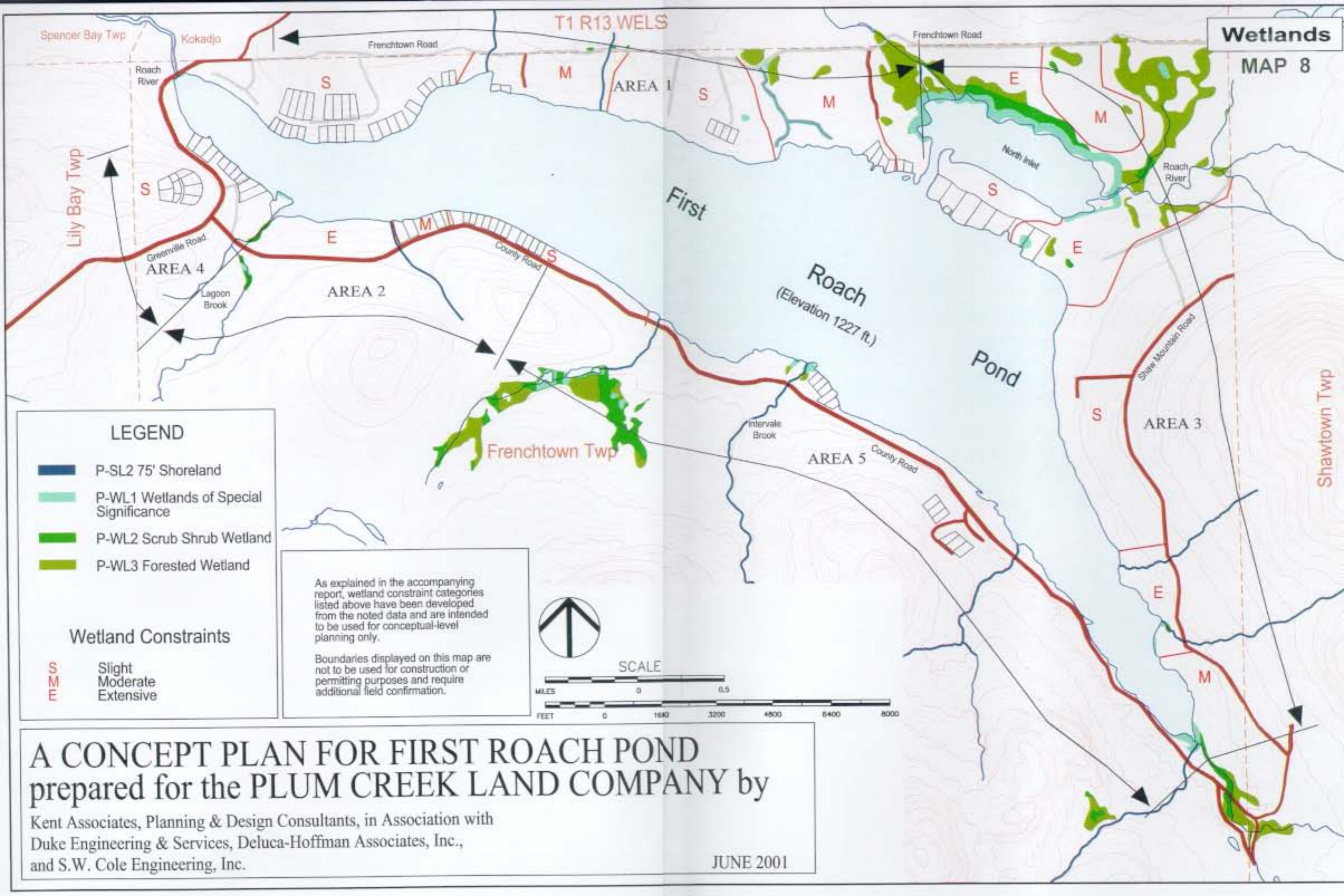
Soil mapping units based on USDA Soil Conservation Service report and field soil testing in 2000 by S.W. Cole Engineering.



A CONCEPT PLAN FOR FIRST ROACH POND
prepared for the PLUM CREEK LAND COMPANY by

Kent Associates, Planning & Design Consultants, in Association with
Duke Engineering & Services, Deluca-Hoffman Associates, Inc.,
and S.W. Cole Engineering, Inc.

JUNE 2001



LEGEND

- P-SL2 75' Shoreland
- P-WL1 Wetlands of Special Significance
- P-WL2 Scrub Shrub Wetland
- P-WL3 Forested Wetland

Wetland Constraints

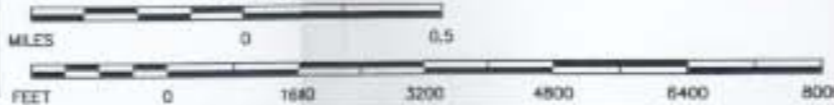
- S** Slight
- M** Moderate
- E** Extensive

As explained in the accompanying report, wetland constraint categories listed above have been developed from the noted data and are intended to be used for conceptual-level planning only.

Boundaries displayed on this map are not to be used for construction or permitting purposes and require additional field confirmation.



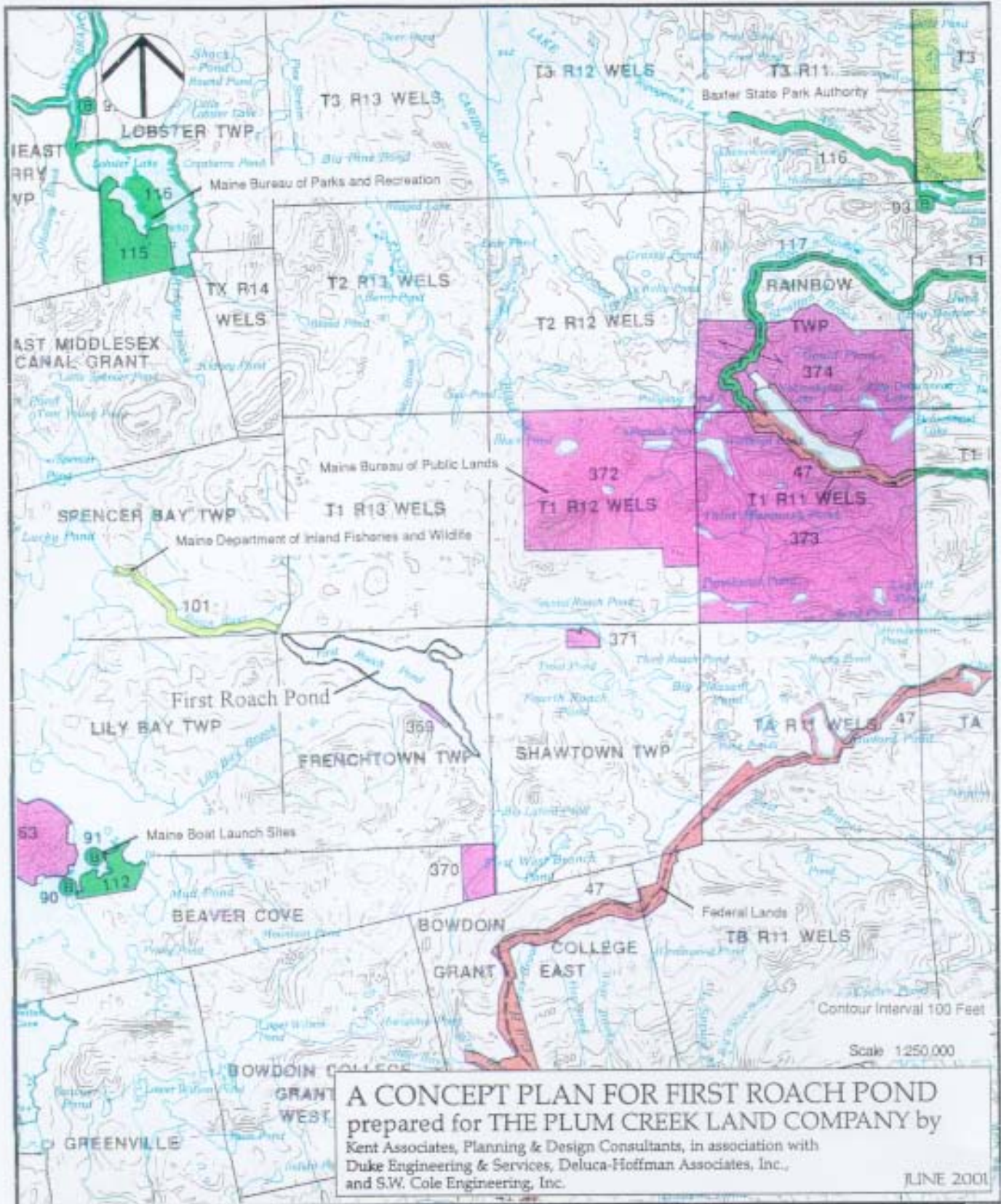
SCALE



A CONCEPT PLAN FOR FIRST ROACH POND prepared for the PLUM CREEK LAND COMPANY by

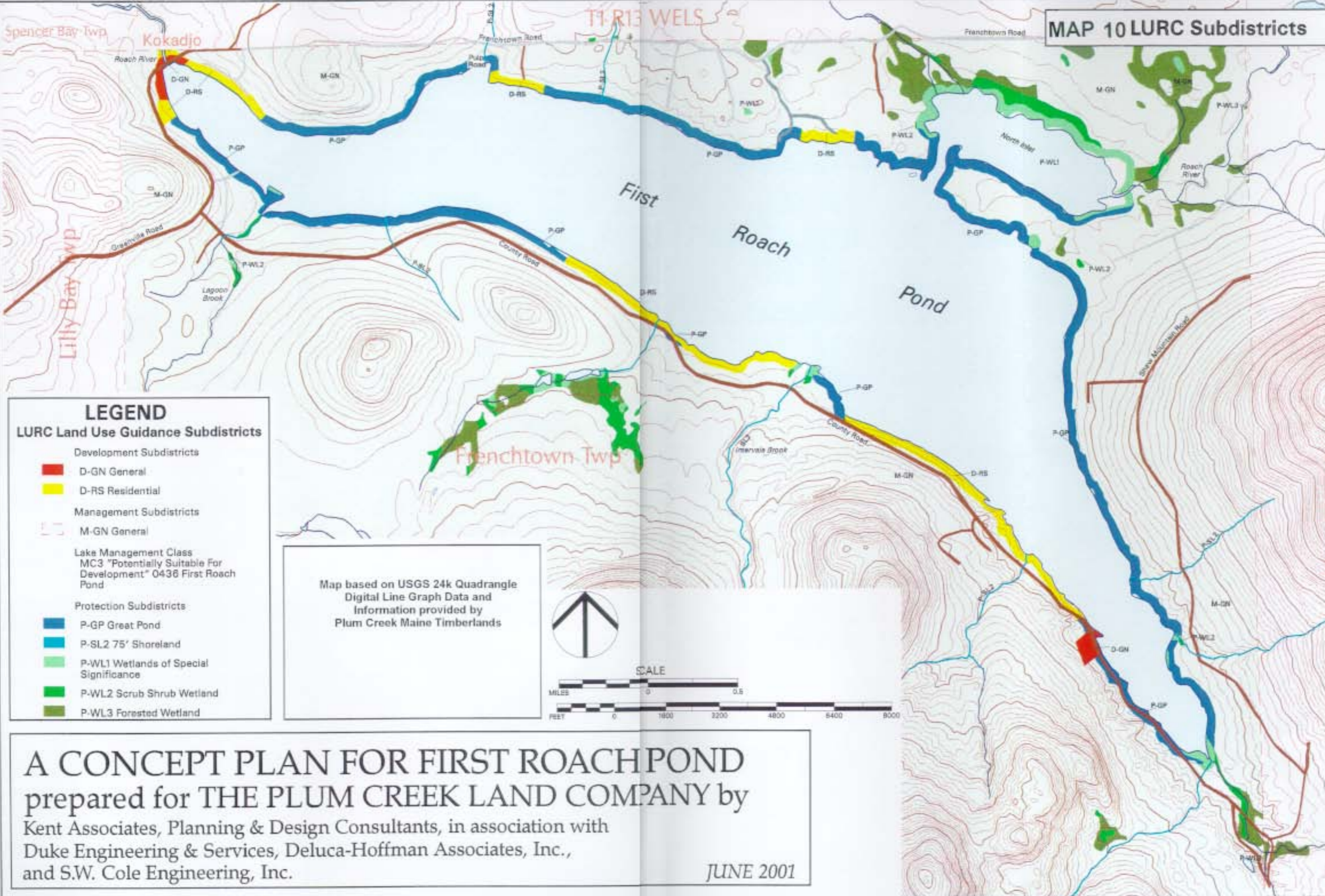
Kent Associates, Planning & Design Consultants, in Association with
Duke Engineering & Services, Deluca-Hoffman Associates, Inc.,
and S.W. Cole Engineering, Inc.

JUNE 2001



MAP 9 : EXISTING CONSERVATION

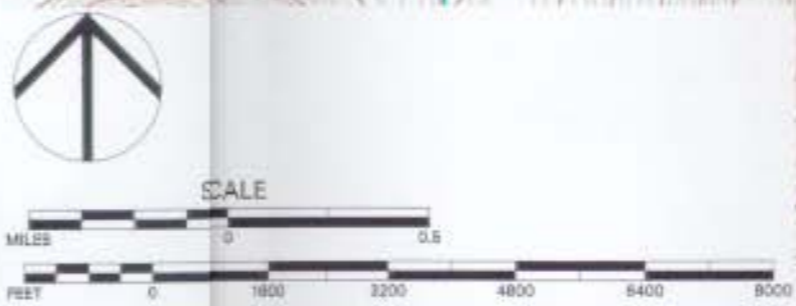
Source: Maine Land in Federal, State, Municipal, and Non-Profit Conservation Ownership (Millinocket Section), by Richard D. Kelly, Jr., Maine State Planning Office



LEGEND
LURC Land Use Guidance Subdistricts

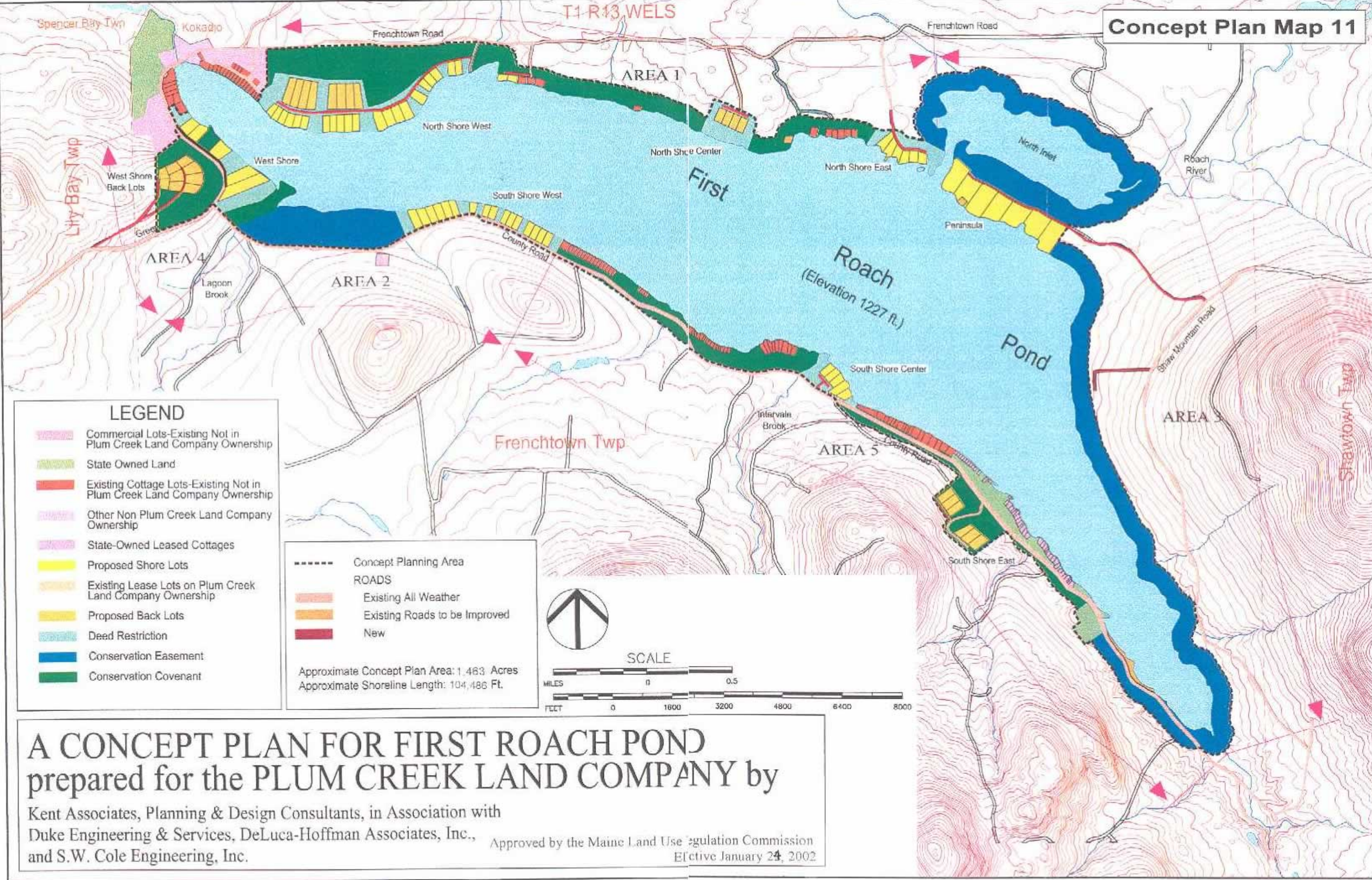
- Development Subdistricts
 - D-GN General
 - D-RS Residential
- Management Subdistricts
 - M-GN General
- Lake Management Class
 - MC3 "Potentially Suitable For Development" 0436 First Roach Pond
- Protection Subdistricts
 - P-GP Great Pond
 - P-SL2 75' Shoreland
 - P-WL1 Wetlands of Special Significance
 - P-WL2 Scrub Shrub Wetland
 - P-WL3 Forested Wetland

Map based on USGS 24k Quadrangle Digital Line Graph Data and Information provided by Plum Creek Maine Timberlands



A CONCEPT PLAN FOR FIRST ROACH POND
prepared for THE PLUM CREEK LAND COMPANY by
Kent Associates, Planning & Design Consultants, in association with
Duke Engineering & Services, Deluca-Hoffman Associates, Inc.,
and S.W. Cole Engineering, Inc.

JUNE 2001



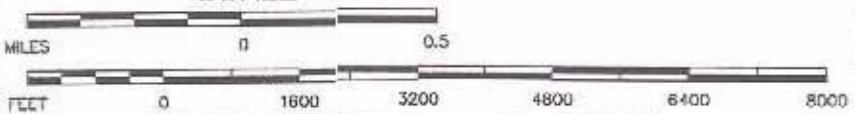
LEGEND

- Commercial Lots-Existing Not in Plum Creek Land Company Ownership
- State Owned Land
- Existing Cottage Lots-Existing Not in Plum Creek Land Company Ownership
- Other Non Plum Creek Land Company Ownership
- State-Owned Leased Cottages
- Proposed Shore Lots
- Existing Lease Lots on Plum Creek Land Company Ownership
- Proposed Back Lots
- Deed Restriction
- Conservation Easement
- Conservation Covenant

- Concept Planning Area
- ROADS**
- Existing All Weather
 - Existing Roads to be Improved
 - New
- Approximate Concept Plan Area: 1,463 Acres
 Approximate Shoreline Length: 104,486 Ft.



SCALE



A CONCEPT PLAN FOR FIRST ROACH POND prepared for the PLUM CREEK LAND COMPANY by

Kent Associates, Planning & Design Consultants, in Association with
 Duke Engineering & Services, DeLuca-Hoffman Associates, Inc.,
 and S.W. Cole Engineering, Inc.

Approved by the Maine Land Use Regulation Commission
 Effective January 24, 2002